



urbanscape®



\$836

▲ AV1116C

AVILLA

With the right curves in the right places, the Avilla collection features a modern design that's perfect for metro settings. The sweeping curves of the arms curl back from the front of the casting for a visually appealing look. In models with backs, these arms stop short of the back, creating a static energy.



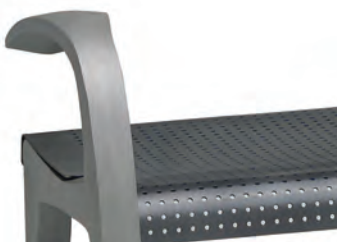
\$836
AV1111C



\$1,018
PH7531P





\$836
AV1116C



\$649
AV1416C



MODEL	DESCRIPTION  SQUARE PERFORATION	WEIGHT	PRICE
AV1111C	6' Bench with back, with arms - Square perforation - Portable/Surface-mount	160	\$836.00
AV1411C	6' Bench without back, with arms - Square perforation - Portable/Surface-mount	110	\$649.00
MODEL	DESCRIPTION  ROUND PERFORATION	WEIGHT	PRICE
AV1116C	6' Bench with back, with arms - Round perforation - Portable/Surface-mount	164	\$836.00
AV1416C	6' Bench without back, with arms - Round perforation - Portable/Surface-mount	111	\$649.00

BUILD YOUR OWN AVILLA

CHOOSE STYLE & FRAME

BENCHES

6' Bench with or without back, with arms

MOUNTING OPTIONS

Portable/Surface-mount

CHOOSE MATERIALS & FINISHES

PATTERNS

Round perforated: 12-Gauge sheet steel
Square perforated: 12-Gauge sheet steel

FRAMING

Permanent-mold cast aluminum

HARDWARE

Stainless steel

Consult your local distributor for pricing.

FINISHES

Powder-coated surfaces and frame.
Superior AAMA 2604-05 specified powder coating.
This line can be coated in one color or you can complement the frame with the surface.
See finish options on page 167.